



Wellbeing at Work
Bronze Award

Rockfield Avenue, Southway, Plymouth, PL6 6DX
Tel : 01752 706360
Email : beechwood.office@discoverymat.co.uk

Friday 16th January 2026

Dear Parents and Carers,

We started this week with Mrs McCarthy leading a whole-school assembly focusing on British Values, where children reflected thoughtfully on respect, tolerance and the importance of working together as a community.

It has been a pleasure to spend time visiting lessons across the school this week. I was extremely proud to see how hard the children are working, particularly the care they are taking with their handwriting and presentation. Their effort and hard work are really paying off.

We are delighted to share that new library books will be coming home with pupils this week. These have been carefully chosen to inspire a love of reading. Please help your child to look after their book and ensure it is returned to school on time so that all children can enjoy them.

Finally, we would like to celebrate the positive attendance we continue to see across the school. Thank you for your ongoing support - regular attendance is vital for children's learning, confidence and friendships. We appreciate your efforts in making sure your child is in school every day and on time. Congratulations to Mount Batten class who are celebrating 100% attendance this week.

We hope you have a lovely weekend.

Mrs Rama-Dominguez and the Beechwood Team.

Diary Dates to Remember

Tuesday 27th January

Yr 1/2 - Synagogue Visit

Fri 30th January

NON-PUPIL DAY

16th Feb to 20th Feb

HALF TERM

Fri 13th March

NON-PUPIL DAY

Mon 16th to Fri 20th March

Yr 4 - Nethercott Farm Trip

Thursday 23rd March

P.T.F.A. Spring Disco

Fri 27th March - 9.30am

Rock Steady Concert

Tues 31st March

Class Photographs

3rd April to 17th April

EASTER BREAK

Mon 27th to Wed 29th April

Yr 5 - Barton Hall Trip

Mon 4th May

BANK HOLIDAY

25th May to 29th May

HALF TERM

Friday 3rd July

P.T.F.A. Mufti - Tombola



ATTEND TODAY
ACHIEVE TOMORROW



ATTENDANCE WORKS

Did you know?

When children attend school they:

- Can achieve their potential
- Have better career prospects
- Learn how to look after themselves and be healthy
- Grow in confidence
- Keep up with work and homework
- Make new friends

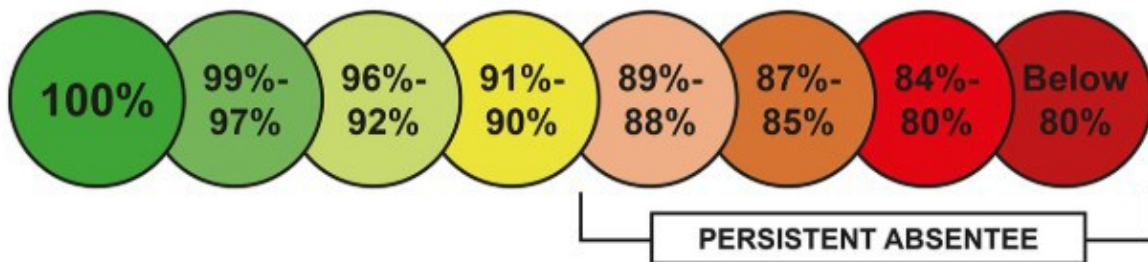
There are
365 days
in a calendar
year

175 days
are not
spent in
school



ATTENDANCE MATTERS

On Time: First Time, Every Time






Which CIRCLE are you in?

Attendance

As you are aware, we are continuing to strive for our attendance target of **96%** and are making some progress to achieving this and ensuring our children regularly attend school to achieve success. Our Attendance Policy can be accessed using the following link:-

[Beechwood Primary Academy - Policies](#)

A gentle reminder to parents, that contact **must** be made with school on your child's first day of absence and each day until they return to school. If you do not provide a reason for your child's absence, this will be recorded as an unauthorised absence and could result in a penalty notice being issued by Plymouth City Council. Arriving late for school after 9.05am will also be recorded as an unauthorised absence and could also result in a fine.

Class		w/c 12th January
Smeaton		97.39%
Firestone		95.56%
	Mayflower	99.31%
Saltram		94.74%
	Mount Batten	100% 
Mt Edgcumbe		94.29%
Dockyard		87.60%
Burrator		90.91%
Raleigh		94.00%

This week our whole school attendance is **95.06%**

This week's winners are :

KS1 - Mayflower Class

KS2 - Mount Batten Class



P.E. Days

Spring Term 1			
Monday	Tuesday	Wednesday	Thursday
Mount Batten (Y3) Outdoors Saltram (Y3) Outdoors Mnt Edgcumbe (Y4) Outdoors			
Dockyard (Y5) Outdoors Mayflower (Y2) Indoors Burrator (Y5/6) Outdoors Firestone (Y1/2) Indoors Raleigh (Y6) Outdoors	Mnt Edgcumbe (Y4) Indoors Mayflower (Y2) Outdoors	Dockyard (Y5) Indoors Firestone (Y1/2) Outdoors Burrator (Y5/6) Indoors Raleigh (Y6) Indoors	Mount Batten (Y3) Indoors Saltram (Y3) Indoors
<p>Children may come to school dressed in their P.E. kits if they have P.E. that day.</p> <p style="text-align: center;">PE uniform at Beechwood Primary is: White T shirt – polo or otherwise / Black shorts or jogging bottoms / Trainers <i>A school jumper can be worn over your PE top if you wish.</i></p>			

Year 1 / 2 DT Topic request

Year 1/2 are making vehicles this term in their DT topic. They would like to request donations of any small plastic containers such as tomato trays, egg boxes, small boxes such as coffee pod containers. Thank you.



Email Addresses to Remember

Year 6 - Raleigh Class - d.poole@discoverymat.co.uk
Year 5/6 - Burrator Class - k.giles@discoverymat.co.uk
Year 5 - Dockyard Class - bwlteacher2@discoverymat.co.uk
Year 4 - Mt Edgcumbe - e.campbell@discoverymat.co.uk
Year 3 - Mount Batten Class - k.kombostiotis@discoverymat.co.uk
Year 3 - Saltram Class - c.pumphrey@discoverymat.co.uk
Year 2 - Mayflower Class - k.gardner@discoverymat.co.uk
Year 1/2 - Firestone Class - c.mccarthy@discoverymat.co.uk
Rec - Smeaton Class - l.gruszka@discoverymat.co.uk
Nursery - Wembury Class - l.gruszka@discoverymat.co.uk

Keeping in Touch

Can we please remind parents that the vast majority of contact between school and parents is done by telephone or email. Please could you ensure that we are kept updated with you current contact details to enable us to keep in touch with you when needed.

Parent Pay

Please activate your parent pay account as this allows us to send Newsletters, trip letters and other important information that we may need to convey to you. Please contact the school office if you need assistance.

Facebook and Website

Please follow us on our Facebook page at Beechwood Primary Academy.
Please refer to our school website for latest news and calendar dates.

TERM DATES 2025/26



Teaching days (statutory)	190
BWD and OAK INSET Days	2
Professional development days	5
Occasional days	5
Sub-total	200
School holidays	53
Bank holidays	8
Saturdays and Sundays	104
Total	365

Term	Start	End	Days
1	03-Sep-25	24-Oct-25	39
2	03-Nov-25	19-Dec-25	35
3	05-Jan-26	13-Feb-26	30
4	23-Feb-26	02-Apr-26	30
5	20-Apr-26	22-May-26	23
6	01-Jun-26	23-Jul-26	38
		Total	195

	SEPTEMBER				
Monday	1	8	15	22	29
Tuesday	2	9	16	23	30
Wednesday	3	10	17	24	
Thursday	4	11	18	25	
Friday	5	12	19	26	

	OCTOBER				
	6	13	20	27	
	7	14	21	28	
1	8	15	22	29	
2	9	16	23	30	
3	10	17	24	31	

	NOVEMBER				
3	10	17	24		
4	11	18	25		
5	12	19	26		
6	13	20	27		
7	14	21	28		

	DECEMBER				
1	8	15	22	29	
2	9	16	23	30	
3	10	17	24	31	
4	11	18	25		
5	12	19	26		

	JANUARY				
Monday		5	12	19	26
Tuesday		6	13	20	27
Wednesday		7	14	21	28
Thursday	1	8	15	22	29
Friday	2	9	16	23	30

	FEBRUARY				
2	9	16	23		
3	10	17	24		
4	11	18	25		
5	12	19	26		
6	13	20	27		

	MARCH				
2	9	16	23	30	
3	10	17	24	31	
4	11	18	25		
5	12	19	26		
6	13	20	27		

	APRIL				
	6	13	20	27	
	7	14	21	28	
1	8	15	22	29	
2	9	16	23	30	
3	10	17	24		

	MAY				
Monday		4	11	18	25
Tuesday		5	12	19	26
Wednesday		6	13	20	27
Thursday		7	14	21	28
Friday	1	8	15	22	29

	JUNE				
1	8	15	22	29	
2	9	16	23	30	
3	10	17	24		
4	11	18	25		
5	12	19	26		

	JULY				
	6	13	20	27	
	7	14	21	28	
1	8	15	22	29	
2	9	16	23	30	
3	10	17	24	31	

	AUGUST				
3	10	17	24	31	
4	11	18	25		
5	12	19	26		
6	13	20	27		
7	14	21	28		

What Parents & Carers Need to Know about AGE-INAPPROPRIATE CONTENT

"Inappropriate" means different things to different people. What's acceptable for one age group, for example, may be unsuitable for a slightly younger audience. Online, young people can chance upon inappropriate content in various ways – from pop-up ads to TikTok videos. The increasingly young age at which children become active in the digital world heightens the risk of them innocently running into something that they find upsetting or frightening. Trusted adults need to be able to help children be aware of what to do if they're exposed to age-inappropriate content.

WHERE IS IT FOUND?

SOCIAL MEDIA

Age-inappropriate content is easily accessible through many social media platforms. TikTok, for instance, is hugely popular with young people but is arguably best known for clips featuring sexualised dancing or profanity. Some social media users also express hate speech or promote eating disorders and self-harm, which could cause lasting damage to a child's emotional and mental health.

GAMING

Gaming is an enjoyable source of entertainment, but many popular titles can expose children to inappropriate material such as violence, horror, gambling or sexually explicit content. Playing games unsuitable for their age risks normalising to children what they are seeing. Some games also include in-game chat, where other (usually older) online players often use language that you probably wouldn't want your child to hear or repeat.

STREAMING

The range of video streaming services available online means that users can find almost anything they want to watch on demand. Children are therefore at risk of viewing TV shows and movies which contain nudity, drug and alcohol abuse, explicit language and extreme violence. Unfortunately, these streaming platforms can't always determine that it's not an adult who's watching.

ADVERTS

Online adverts frequently include age-inappropriate content: usually gambling and nudity or partial nudity, although adverts for alcohol or e-cigarettes are also common. Some search engines also feature adverts that are responsive to your search history: so if you've recently looked up a new horror movie, shopped for lingerie or ordered alcohol online, then the ads appearing on screen could reflect this the next time your child borrows your device.

Advice for Parents & Carers

TALK IT THROUGH

Embarrassment or fear of getting into trouble can make it difficult for children to talk openly about age-inappropriate content they've watched. Remind your child they can always come to you if they're troubled by something they've seen online, without worrying about consequences. Before offering advice, discuss what they saw, how they felt and how they came to find the content in question.

CONNECT, DON'T CORRECT

If your child's been particularly distressed by exposure to content that wasn't suitable for their age, it's important to offer guidance to prevent them from repeating the same mistake – but it's equally vital to help them deal with the emotions that the situation has raised. You could tell them about any similar experiences you might have had at their age, and how you dealt with it.

BLOCK, REPORT, CONTROL

After discussing the problem, you and your child can take action together. This could include blocking any inappropriate sites and reporting any content which violates a platform's rules. To further safeguard your child online, set up parental controls on internet-enabled devices that they use. This will significantly reduce the chances of your child being exposed to age-inappropriate content in future.

GET SPECIALIST HELP

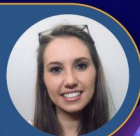
Age-inappropriate content can potentially have a negative impact on a child's mental health, which is sometimes displayed through changes in their behaviour. If the problem becomes more severe, you might consider reaching out to a mental health professional or an expert in this field who can provide you and your child with the proper support.

STAY CALM

Even though it is obviously difficult to stay rational in a situation where your child has been put at risk, it's essential to think before you react. Your child may well have hesitated to open up to you about watching inappropriate content for fear of the consequences, so being calm and supportive will reinforce the notion that it would be easy to talk to you about similar issues in the future.

Meet Our Expert

Cayley Jorgensen is a Registered Counsellor with The Health Professions Council of South Africa, and she runs a private practice offering counselling to children, teenagers and families. Her main focus is creating awareness and educating the community on the mental health pressures of today's world, as well as resources and techniques to understand and cope better.



Sources: <https://www.education.vic.gov.au/Documents/about/programs/bullyingstoppers/sminappropriate.pdf> | <https://www.esafety.gov.au/educators/training-professionals/professional-learning-program-teachers/inappropriate-content-factsheet1> | <https://www.revealingreality.co.uk/wp-content/uploads/2021/04/childrens-media-lives-year-7.pdf>



www.nationalonlinesafety.com



@natonlinesafety



/NationalOnlineSafety



@nationalonlinesafety

Users of this guide do so at their own discretion. No liability is entered into. Current as of the date of release: 01.12.2021



National Online Safety

#WakeUpWednesday