



Rockfield Avenue, Southway, Plymouth, PL6 6DX
 Tel : 01752 706360
 Email : beechwood.office@discoverymat.co.uk
 Website : www.beechwood-primary.co.uk

Friday 7th February 2025

Hello everyone, I hope you have all had a good week.

It has been children's mental health week this week and our children have taken part in various activities which included a launch assembly on Monday and our year 6 pupils writing and performing a rap!

In addition to this, Year 3 had a visit from the Wembury Marine centre today. There will be more information about this exciting visit on our FB page soon and in next week's newsletter.

Hope you all have a lovely weekend,

Mr Arnold and the Beechwood Team.



Diary Dates to Remember

Tuesday 11th February

**Rec - Space Day
 Parent Forum - 3pm**

**17th Feb to 21st Feb
 HALF TERM**

**24th Feb - 14th March
 Yr 5 Swimming Lessons**

**Tues 25th February
 Nethercott Farm Meeting 3.30**

**Thurs 27th Feb - 2.45pm
 Yr 1/2 - Price Class Assembly**

**3rd - 6th March
 Parent/Teacher Meetings**

**Tues 4th March
 Careers Day - Mufti**

**Wed 5th & Thurs 6th March
 Book Fayre - 3.30pm**

**Thurs 6th March
 World Book Day - Mufti**

**Thurs 13th March - 2.45pm
 Yr 4/5 - Holst Class Assembly**

**Mon 17th - Fri 21st March
 Yr 4 - Nethercott Farm**

**Tuesday 1st April
 PTFA - KS1/KS2 Easter Disco**

**Wed 2nd April
 Class Photographs**

**Thur 3rd April
 Rock Steady Concert**

Beechwood Primary Academy Careers Day



CALLING ALL VOLUNTEERS!



**We need your help on
Tuesday 4th March - pm**

Beechwood Primary Academy are looking for volunteers within our community to support our Careers Day.

Come along to talk to our children about your career. This will be an excellent way to provide them with first-hand knowledge of different careers and career paths.

As part of this celebration, pupils may come to school dressed up as someone from their favourite career or who they aspire to be.

Please contact the school to express your interest:
01752 706360
beechwood.desk@discoverymat.co.uk



YEAR 6 LEAVERS HOODIES 2025



In preparation for Year 6 Leavers in July, The P.T.F.A. will be ordering hoodies again.

Please complete this form and return to the school office no later than **MONDAY 24th FEBRUARY 2025** if you would like to purchase a hoodie for your child.

Also to secure your hoodie, payments to be made via **PARENT PAY** also by Monday 24th February 2025.

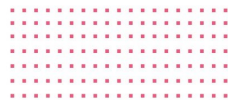
Hoodies will be given out near the end of the summer term.

Name:

Class:

Signed:

I DO / DO NOT wish my child's name to be on the back of the hoodie.



SIZE GUIDE
(PLEASE SELECT)

CHILDS - 9-11 YRS (32") - £18.50

CHILDS - 12-13 YRS (34") - £18.50

ADULTS - SMALL (36") - £23.50

ADULTS - MEDIUM (40") - £23.50

ADULTS - LARGE (44") - £23.50

ADULTS - X LARGE (48") - £23.50

ADULTS - XX LARGE (52") - £23.50

BUY NOW!



Beechwood Primary Academy

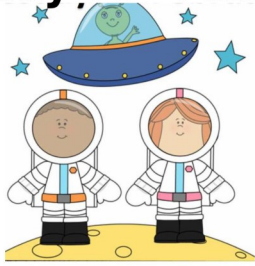
Parent Forum

Pop along for a chat with Mr Arnold on
Tuesday 11th February at 3.00pm

Please wait by the black gates outside of the dining hall.



Space Day! Tuesday 11th February



Mozart class are having a space themed WOW day!

As a part of that day children can come in dressed as something linked to space. They will be going for a “walk on the moon” and trying space food.

We would then like to invite parents in from 2:15pm to join us for a space themed stay and play. Please arrive at Reception and sign in.

CATERed
THE ORIGINAL LOCAL CATERER

TEDDY BEAR DAY

THE DAY THE TEDDY BEARS HAVE THEIR SCHOOL LUNCH!
MONDAY 10TH FEBRUARY



Winnie the Pooh honey chicken
with seasoned wedges and coleslaw,
Kung Fu Panda stir fried noodles with veg,
Paddington Bear marmalade cake

Family Friendly at Plymouth Arts Cinema

SPIRITED AWAY



Tickets
£4

“ONE OF THE BEST FILMS OF ALL TIME”
DAZED
★★★★★
THE GARDIAN
★★★★★
EMERALD SPY

“A MUST-SEE MASTERPIECE”
DIGITAL SPY
★★★★★
THE INDEPENDENT
★★★★★
FINANCIAL TIMES
★★★★★
ALL FILMS ARE RADIOSONS

Wednesday 19th February, 11am
Saturday 22nd February, 11am

FREE drop-in colouring workshop
from 10am on Saturday 22nd.

- Relaxed, accessible and neurodiverse friendly ←
- Babies are welcome
- Cinema snacks and hot and cold drinks at the bar ←
- Award-winning local independent cinema!

Plymouth
Arts
Cinema

At Arts University Plymouth, Tavistock Place, PL4 8AT
info@plymouthartscinema.org | www.plymouthartscinema.org | 01752 206114



ARGYLE
COMMUNITY
TRUST



FEBRUARY HALF TERM ROADSHOWS

PLYMOUTH FEB 2025 | 9.30AM-3.30PM BOYS & GIRLS ALL ABILITIES AGED 5-15

New & improved roadshows with huge savings!

Prices
from
£10!!!

Monday, 17 February

Magic Monday at Home Park - £10
Ivybridge Community College Football Roadshow - £15

Tuesday, 18 February

Technical Tuesday at Manadon Sport Hub - £15
Wembury Primary School Multi Sports - £15
Sherford Community Hub Football Roadshow - £15

Wednesday, 19 February

Wild Wednesday Street Games at Manadon Sport Hub - £15
Wembury Primary School Gymnastics Roadshows - £15

Thursday, 20 February

Thursday Thrill Epic Football Tournament Day
at Manadon Sports Hub - £15
Lipson Vale Primary School Multi Sports - £15

Friday, 21 February

Friday Fanatics at Home Park - £15



SCAN ME

Book now 01752 522202
www.officialsoccerschools.co.uk/argyle/courses.html

www.argylecommunitytrust.co.uk

Beechwood Primary Academy



WORLD BOOKDAY

Thursday 6th March

To help celebrate World Book Day, children may come to school dressed in their pyjamas or as their favourite book character

no donation required

English Hubs

Ilsham English Hub



FAMILY SUPPORT SESSION SUPPORTING YOUR CHILD ON THEIR READING JOURNEY WEDNESDAY 5TH MARCH 2-3PM ON ZOOM



Ilsham National English Hub would like to invite you to attend a **FREE** session to support you with helping your child at home in their reading journey.

During this free, hour-long session, The Ilsham National English hub team will be sharing videos and practical solutions to support practice at home. The focus will be on supporting your child to become an expressive fluent reader. This session is targeted at families (including grandparents), carers, childminders and before/after school provision workers. It is designed to support children from pre school age up to the end of Key Stage One (Year 2). Please note, this session will not be recorded.

Any questions or queries please contact:

englishhub@lpsw.org

[HTTPS://FORMS.OFFICE.COM/E/KJHUJU312B](https://forms.office.com/E/KJHUJU312B)



Free School Meals

You may be entitled to apply for Free School Meals for your child/ren if you receive the following benefits:-

- Universal Credit, Income Support
- Income Based Job Seekers Allowance,
- Income Related Element of Employment and Support Allowance,
- Guaranteed Credit element of Pension Credit
- Child Tax Credit (without Working Tax Credit) with an annual income of £16,190 or less.

We would urge parents who may be eligible for Free School Meals for the children to either apply on-line through the Plymouth City Council website or contact the school office for a form as soon as possible. This is very important, even if your child does not wish to take up the free meal. The register of FSM entitlement affects our overall school budget and we may be missing out on funding as a result.

Please do not confuse this with Universal Free School Meal entitlement for children in Years Reception to Year Two.

**Free
School
Meals** 
Are you entitled?

BOOK FAYRE



Wednesday 5th & Thursday 6th March
at 3.30pm

We would like to invite parents/ carers to a Book Fayre here at Beechwood Primary Academy.

Please come into school through the dining hall gates at the end of the school day.

Martial Arts After School Club for Years 3-6.

Monday 3rd, 10th and 24th Feb, £5 total.

To book please get in touch with Miss B:-

Email: missbsmartialartsacademy@gmail.com

Phone: 07480616571

www.facebook.com/missbsmartialartsacademy





YouTube is an online platform - owned by Google - where anyone can upload & watch video content. All different types of information, advice & entertainment are uploaded & billions of people tune in to watch, rate & comment on it. As a parent, it's important you understand exactly what content your children might be seeing.

What parents need to know about YOUTUBE

INAPPROPRIATE CONTENT EASY TO ACCESS

Any child with a Gmail account can sign into YouTube & access videos. Some content is flagged 'age-restricted', but the platform relies on self-verification, meaning kids can get around the rules with a fake date of birth. This could enable access to vulgar, violent & dangerous videos.

USERS CAN PRIVATELY CONTACT YOUR CHILD

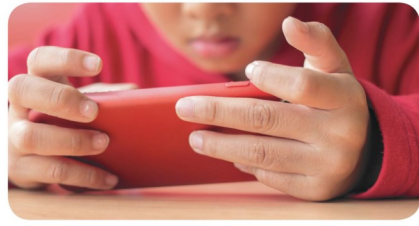
When your child is signed-in to YouTube with their Gmail account, there are various ways they can send & receive messages. This could be via the messages icon, or via the 'About' tab. There is scope here for users who your child does not know to make contact.

YOUTUBE SUGGESTS RELATED CONTENT

YouTube will often 'auto play' videos based on your child's viewing habits. The aim is to show related & appropriate content. But the problem is: it's possible your child will be exposed to inappropriate content that isn't accurately related.

'CHALLENGE VIDEOS' CAN GO TOO FAR

Challenge videos refer to a stunt you're encouraged to recreate & film. Many challenge videos can be harmless & for a good cause, like the Ice Bucket Challenge. But some are dangerous & even life threatening, such as the Bird Box Challenge.



SHARING VIDEOS RISKS YOUR CHILD'S PRIVACY

If your child has a Google account, they can upload their own videos. To do this, they must create a personal profile page known as a 'YouTube Channel'. The videos uploaded here can be viewed, commented on & shared by anyone. This could put your child's privacy at risk.

Tips To Protect Your Child

APPLY 'RESTRICTED MODE'

Restricted mode helps to hide any mature or unpleasant videos from your children. It uses YouTube's own automated system & looks at what other users flag as inappropriate content. It must be enabled in the settings menu on each individual device.

CHANGE WHO CAN SEE VIDEOS

You can change who can view your child's content in the settings. Options include Public (available to all), Private (only available to people you share it with & cannot be shared) or Unlisted (available to people you share it with & can be shared further).

BLOCK CONCERNING USERS

To help protect your child from cyber-bullies, harassment or persistent offensive comments, you can 'block' individual users. Doing so hides your child's videos from the user & stops the user being able to contact your child in any way.

CUSTOMISE THEIR EXPERIENCE

Influence & control what your child watches using features such as Playlists (your videos play continuously rather than videos YouTube recommends) & Subscriptions (you choose channels your child can watch). It's also good to turn off auto play by toggling the blue button alongside the 'Up Next' title when viewing a video.

CREATE A 'FAMILY' GOOGLE ACCOUNT

Create a Google account to be used by the whole family. This will allow you to monitor exactly what your child is watching, uploading & sharing. Plus, your child's YouTube page will display their recently watched videos, searches, recommended videos & suggested channels.

GET YOUR OWN ACCOUNT

Create your own account so you can explore features yourself. Learn how to flag inappropriate videos, how to moderate comments & how to block users. This will help you feel more confident when providing advice & guidance to your children.

BE MINDFUL OF CYBERBULLYING

Once your child has posted a video, a worldwide audience can see it. Strangers may choose to comment on the video, both positively & negatively. So, be careful to check comments & any other interactions your child is making through the platform.

GET TO KNOW POPULAR CHANNELS

It's good to know which channels are most popular with your children. Some of the most popular channels right now are: PewDiePie, NigaHiga, Zoella, KSI, JennaMarbles, Markiplier, Smosh, ThatcherJoe & Casper Lee.

DON'T ASSUME YOUR CHILD IS TOO YOUNG

YouTube and YouTube Kids are quickly becoming the chosen viewing platforms for children between the ages of 3-15 & it's likely this trend will only increase. It's also possible children will become familiar with the platform at a younger & younger age. So it's important to understand the positives & negatives of the platform.

National Online Safety
#WakeUpWednesday

Meet our expert

Pete Badh is a writer with over 10+ years in research and analysis. Working within a specialist area for West Yorkshire Police, Pete has contributed work which has been pivotal in successfully winning high profile cases in court as well as writing as a subject matter expert for industry handbooks.

SOURCES: <https://support.google.com/accounts/answer/7350409>, <https://support.google.com/youtube/answer/6401182>, <https://support.google.com/youtube/answer/2802272?hl=en-GB>, <https://support.google.com/youtube/answer/7354993?hl=en-GB>, <https://www.youtube.com/intl/en-GB/y/about/policies/#community-guidelines>, https://www.ofcom.org.uk/_data/assets/pdf_file/0024/13490/Children-and-Parents-Media-Use-and-Attitudes-2018.pdf, <https://www.raisingdigitalnatives.com/youtube-parenting/>, <https://www.net-aware.org.uk/networks/youtube/>, <https://www.theguardian.com/technology/2019/jan/16/youtube-bans-dangerous-pranks-after-bird-box-challenge>

TERM DATES 2024/25



Teaching days (statutory)	190
Professional development days	5
Occasional days	5
Sub-total	200
School holidays	52
Bank holidays	8
Saturdays and Sundays	105
Total	365

Term	Start	End	Days
1	03-Sep-24	25-Oct-24	39
2	04-Nov-24	20-Dec-24	35
3	06-Jan-25	14-Feb-25	30
4	24-Feb-25	04-Apr-25	30
5	22-Apr-25	23-May-25	23
6	02-Jun-25	23-Jul-25	38
Total			195

SEPTEMBER					
Monday	2	9	16	23	30
Tuesday	3	10	17	24	
Wednesday	4	11	18	25	
Thursday	5	12	19	26	
Friday	6	13	20	27	

OCTOBER					
	7	14	21	28	
1	8	15	22	29	
2	9	16	23	30	
3	10	17	24	31	
4	11	18	25		

NOVEMBER					
	4	11	18	25	
	5	12	19	26	
	6	13	20	27	
	7	14	21	28	
1	8	15	22	29	

DECEMBER					
2	9	16	23	30	
3	10	17	24	31	
4	11	18	25		
5	12	19	26		
6	13	20	27		

JANUARY					
	6	13	20	27	
Monday		7	14	21	28
Tuesday		8	15	22	29
Wednesday	1	8	15	22	29
Thursday	2	9	16	23	30
Friday	3	10	17	24	31

FEBRUARY					
3	10	17	24		
4	11	18	25		
5	12	19	26		
6	13	20	27		
7	14	21	28		

MARCH					
3	10	17	24	31	
4	11	18	25		
5	12	19	26		
6	13	20	27		
7	14	21	28		

APRIL					
	7	14	21	28	
1	8	15	22	29	
2	9	16	23	30	
3	10	17	24		
4	11	18	25		

MAY					
	5	12	19	26	
Monday		6	13	20	27
Tuesday		7	14	21	28
Wednesday		8	15	22	29
Thursday	1	9	16	23	30
Friday	2	10	17	24	31

JUNE					
2	9	16	23	30	
3	10	17	24		
4	11	18	25		
5	12	19	26		
6	13	20	27		

JULY					
	7	14	21	28	
1	8	15	22	29	
2	9	16	23	30	
3	10	17	24	31	
4	11	18	25		

AUGUST					
	4	11	18	25	
	5	12	19	26	
	6	13	20	27	
	7	14	21	28	
1	8	15	22	29	

Spring Term 1

Reception	Year 1 and 2	Year 3	Year 4 and 5	Year 6
Monday Fundamentals 	Monday Fundamentals (basic skills) 	Wednesday Martial Arts 	Wednesday Gymnastics (Bernstein and Holst) Martial Arts (Dun) 	Tuesday Tag rugby
	Tuesday Dance 	Thursday Tag rugby 	Thursday- Bernstein and Holst Tuesday- Dun Class Tag rugby 	Thursday Gymnastics

Assembly Dates

- Thursday 27th February - 2.45pm
- Thursday 13th March - 2.45pm
- Thursday 8th May - 2.45pm
- Thursday 12th June - 2.45pm
- Thursday 3rd July - 2.45pm

- Year 1/2 - Price Class Assembly
- Year 4/5 - Holst Class Assembly
- Year 1/2 - Vivaldi Class Assembly
- Year 1/2 - Zimmer Class Assembly
- Year R - Mozart Class Assembly



Email Addresses to Remember

Year 6 - Elgar Class - k.giles@discoverymat.co.uk
Year 6 - Tchaikovsky Class - d.poole@discoverymat.co.uk
Year 4/5 - Bernstein Class – c.pumphrey@discoverymat.co.uk
Year 4/5 - Dun Class – k.matthews@discoverymat.co.uk
Year 4/5 - Holst Class – s.pindard@discoverymat.co.uk
Year 3 - Lloyd-Webber Class – i.watson@discoverymat.co.uk or k.rust@discoverymat.co.uk
Year 1/2 - Price Class – c.townsend@discoverymat.co.uk
Year 1/2 - Vivaldi Class – c.mccarthy@discoverymat.co.uk
Year 1/2 - Zimmer Class – k.gardner@discoverymat.co.uk
Rec - Mozart Class – m.abbott@discoverymat.co.uk or l.gruszka@discoverymat.co.uk
Nursery - Brahms Class – m.abbott@discoverymat.co.uk or c.mccarthy@discoverymat.co.uk

Keeping in Touch

Can we please remind parents that the vast majority of contact between school and parents is done by telephone or email. Please could you ensure that we are kept updated with you current contact details to enable us to keep in touch with you when needed.

Parent Pay

Please activate your parent pay account as this allows us to send Newsletters, trip letters and other important information that we may need to convey to you. Please contact the school office if you need assistance.

Facebook and Website

Please follow us on our Facebook page at Beechwood Primary Academy.
Please refer to our school website for latest news and calendar dates.



BEECHWOOD FAMILY SUPPORT TEAM



					
Miss Sam Roscoe	Mr C Randall Assistant Head of School	Mrs Natasha Jackson INCO	Mr P Arnold Senior Head of School	Mrs S Rama-Dominguez Assistant Head of School	Mrs Teresa Pinhey
First Contact to signpost parents	Deputy Designated Beechwood Academy Lead for Safeguarding	SEND Support	Designated Beechwood Academy Lead for Safeguarding	Deputy Designated Beechwood Academy Lead for Safeguarding	Community Support
Foodbank	Safeguarding	SEND and behaviour-support for parents	Family Support	Safeguarding	School Life
Courses for Parents / Carers	Behaviour	School Nurse Referrals		Education and Curriculum	Parents Question & Answer
PTFA Contact	Family Crisis	DLA Applications		Family Support	Local Issues
	Service Families	GP letters			Coffee Mornings

You can contact us by emailing beechwood.desk@discoverymat.co.uk and we will direct your enquiry accordingly.